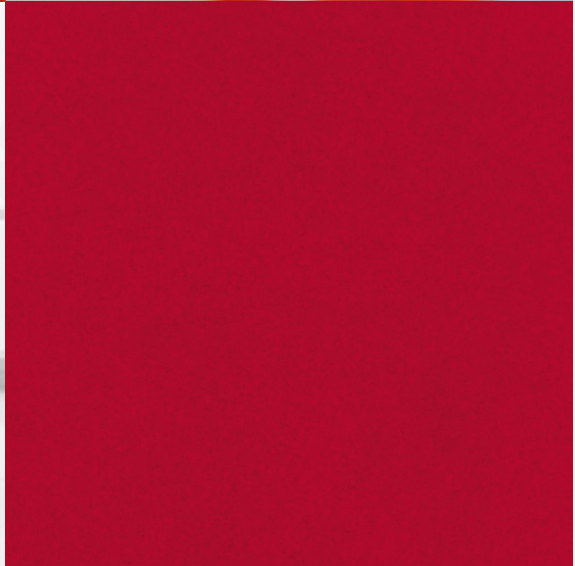
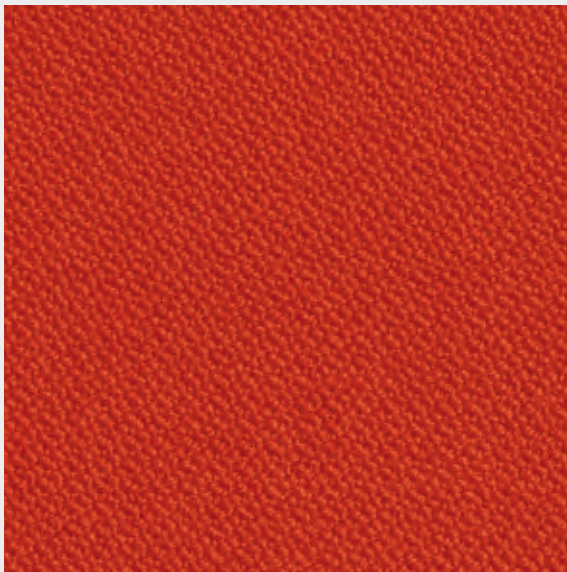


Colours

Tyger och skärmttyger *Fabrics and screen fabrics*

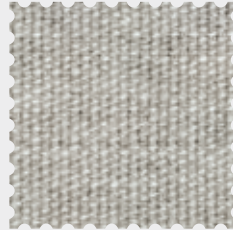




Oxygen 142
Camira Fabrics, Tranquil BA005, Grey



Classica 236
Dinamica, 9563, Green



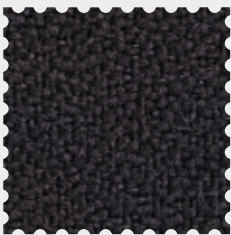
Heidal 292
GU, 120, Light Grey Melange



Oxygen 141
Camira Fabrics, Inhale BA001, Black



Oxygen 140
Camira Fabrics, Relax BA008, Green



Xtreme Plus 220
Camira Fabrics, Sombrero YS046, Grey



Comfort+ 668
Gabriel A/S, 68001, Green



Xtreme Plus 222
Camira Fabrics, Havana YS009, Black



Classica 231
Dinamica, 9189, Grey



Classica 233
Dinamica, 9232, Red



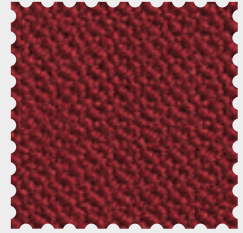
Fame 153
Gabriel A/S, 64089, Red



Comfort+ 661
Gabriel A/S, 1414, Red



Comfort+ 651
Gabriel A/S, 0050, Black



Oxygen 147
Camira Fabrics, Aloe BA020, Dark Red



Xtreme Plus 221
Camira Fabrics, Calypso YS106, Red



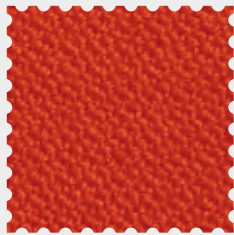
Oxygen 148
Camira Fabrics, Liberty BA030, Red



Fame 161
Gabriel A/S, 60999, Black



Comfort+ 650
Gabriel A/S, 0049, Grey



Oxygen 149
Camira Fabrics, Yarrow BA034, Orange





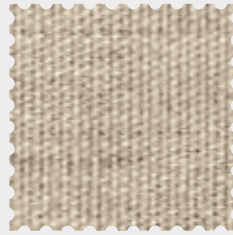
Elmosoft 501
Elmo, Black



Comfort+ 669
Gabriel A/S, 0010, Brown



Classica 230
Dinamica, 9059, Black



Heidal 294
GU, 220, Light Beige Melange



Fame 165
Gabriel A/S, 60019, Grey



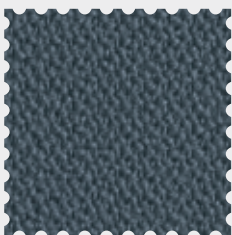
Heidal 293
GU, 370, Brown Melange



Classica 232
Dinamica, 9064, Brown



Fame 163
Gabriel A/S, 60051, Grey



Oxygen 145
Camira Fabrics, Karma BA004,
Light Grey



Oxygen 144
Camira Fabrics, Cirrus BA015, Brown





Classica 235
Dinamica, 9279, Navy



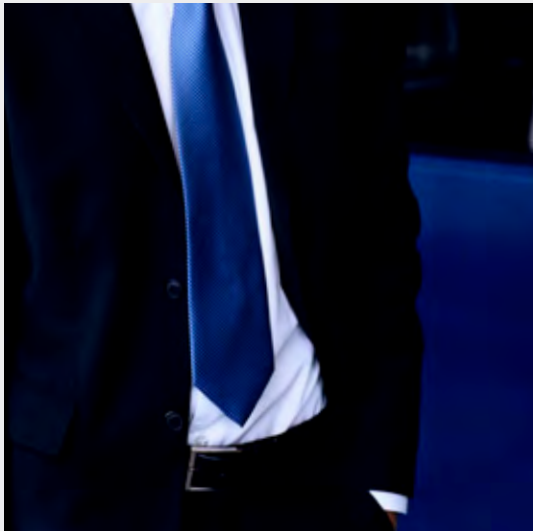
Fame 154
Gabriel A/S, 66071, Blue



Heidal 291
GU, 190, Koks



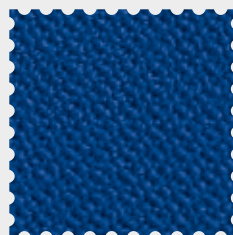
Comfort+ 671
Gabriel A/S, 0040, Navy



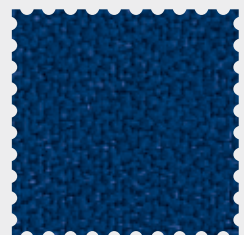
Classica 234
Dinamica, 8426, Blue



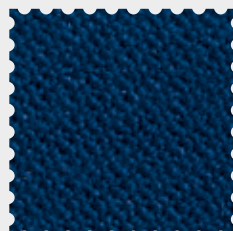
Fame 162
Gabriel A/S, 66061, Navy



Oxygen 146
Camira Fabrics, Serene BA021, Blue



Xtreme Plus 223
Camira Fabrics, Ocean YS100, Blue



Oxygen 143
Camira Fabrics, Cleanse BA002, Dark Blue



Comfort+ 670
Gabriel A/S, 66004, Blue



Palermo 533
BWF, 30005, White



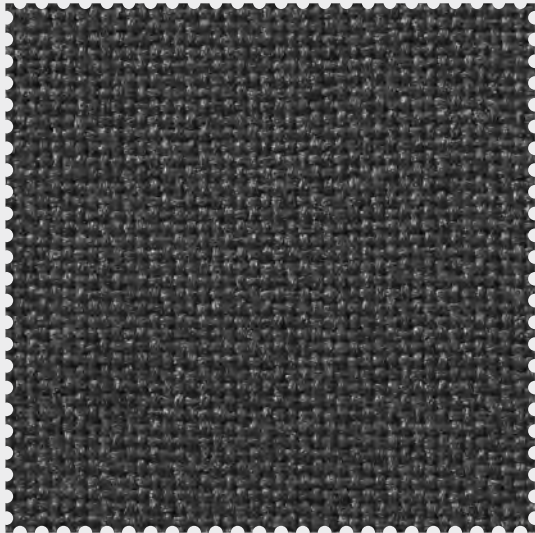
Palermo 537
BWF, 30007, Dark blue/Navy



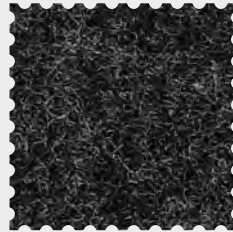
Palermo 536
BWF, 30006, Green/Lime



Palermo 534
BWF, 30008, Blue



Cara 510
Camira Fabrics, 510 Merrick, Grey



Palermo 532
BWF, 30428, Grey



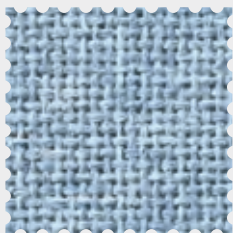
Palermo 538
BWF, 30009, Orange



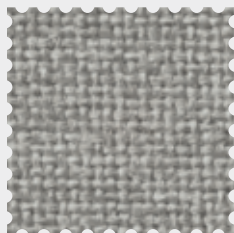
Palermo 531
BWF, 0148, Black



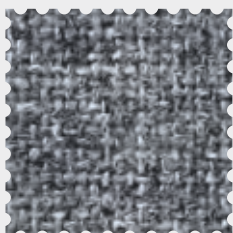
Palermo 535
BWF, 30010, Red



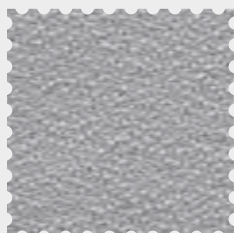
Cara 514
Camira Fabrics, 514 Dolphin, Light Blue



Cara 511
Camira Fabrics, 511 Spray, Grey



Cara 519
Camira Fabrics, 519 Lead, Grey



Attraction Screen 300
Gabriel A/S, 60004, Light Grey



Attraction Screen 301
Gabriel A/S, 60002, Grey

Classica

Tillverkare: Dinamica.
Bredd: 142 cm.
Komposition: 88 % polyester / 12 % polyurethan.
Nötningshållfasthet: ≥116.000 Martindale,
ISO 12947-1-2-3-4.
Flamhårdighet: BS 5852 P1 0 Cigaret, California 117.
Tvättråd: 60° C.
Miljömärkning: Øko tex 100.

*Producer: Dinamica.
Width: 142 cm.
Composition: 88 % polyester / 12 % polyurethan.
Abrasion resistance: ≥116.000 Martindale,
ISO 12947-1-2-3-4.
Flammability: BS 5852 P1 0 Cigaret, California 117.
Cleaning: 60° C.
Ecolabel: Øko tex 100.*

Comfort+

Tillverkare: Gabriel A/S.
Bredd: 140 cm.
Komposition: 88 % polyester / 12 % polyurethan.
Nötningshållfasthet: 100.000 Martindale.
Flamhårdighet: BS EN 1021-1, ISO 8191-1 (cigarette), BS 5852 P1 0 Cigaret, California 117.
Tvättråd: 60° C.
Miljömärkning: Øko tex 100.

*Producer: Gabriel A/S.
Width: 140 cm.
Composition: 88 % polyester / 12 % polyurethan.
Abrasion resistance: 100.000 Martindale.
Flammability: BS EN 1021-1 ISO 8191-1 (cigarette), BS 5852 P1 0 Cigaret, California 117.
Cleaning: 60° C.
Ecolabel: Øko tex 100.*

Elmosoft

Tillverkare: Elmo Leather AB.
Ljusåktthet: 6.
Gnidning: Vät 80/4, Torr 2000/4, Fuktig 50/4, ISO 11640.
Flamhårdighet: EN 1021-: 1-2 (cigarette/match), ISO 8191 I&II, California 117, BS 5852 Crib 5, IMO A652 (16).
Finish vidhäftning: 2 N/CM - ISO 11644.
Rivstyrka: 20 N DIN 53329- A.

*Producer: Elmo Leather AB.
Lightfastness: 6.
Rubbing: Wet 80/4, Dry 2000/4, Sweat 50/4, ISO 11640.
Flammability: EN 1021-: 1-2 (cigarette/match), ISO 8191 I&II, California 117, BS 5852 Crib 5, IMO A652 (16).
Finish-adhesion: 2 N/CM - ISO 11644.
Tear strength: 20 N DIN 53329- A.*

Fame

Tillverkare: Gabriel A/S.
Bredd: 140 cm.
Komposition: 95 % ull / 5 % polyamid.
Nötningshållfasthet: >200.000 Martindale.
Flamhårdighet: BS EN 1021-1 ISO 8191-1 (cigarette), BS EN 1021-2 ISO 8191-2 (match).
Tvättråd: Kemtvätt.
Miljömärkning: EU flower.

*Producer: Gabriel A/S.
Width: 140 cm.
Composition: 95 % wool / 5 % polyamid.
Abrasion resistance: >200.000 Martindale.
Flammability: BS EN 1021-1 ISO 8191-1 (cigarette), BS EN 1021-2 ISO 8191-2 (match).
Cleaning: Dry clean.
Ecolabel: EU flower.*

Heidal

Tillverkare: Gudbrandsdalens Uldvarefabrik AS.
Bredd: 150 cm.
Komposition: 80 % ull / 10 % polyamid / 10 % viscose.
Nötningshållfasthet: 82.000 Martindale.
Flamhårdighet: BS EN 1021-1 ISO 8191-1 (cigarette), BS EN 1021-2 ISO 8191-2 (match), IMO A652 (16).
Tvättråd: Kemtvätt.

*Producer: Gudbrandsdalens Uldvarefabrik AS.
Width: 150 cm.
Composition: 80 % wool / 10 % polyamid / 10 % viscose.
Abrasion resistance: 82.000 Martindale.
Flammability: BS EN 1021-1 ISO 8191-1 (cigarette), BS EN 1021-2 ISO 8191-2 (match), IMO A652 (16).
Cleaning: Dry cleaning or with foam detergents.*

Oxygen

Tillverkare: Camira Fabrics Ltd.
Bredd: 140 cm.
Komposition: 90 % ull / 10 % nylon.
Nötningshållfasthet: 100.000 Martindale.
Flamhårdighet: BS EN 1021-1 ISO 8191-1 (cigarette), BS EN 1021-2 ISO 8191-2 (match), BS 7176:1995 Low Hazard.
Tvättråd: Kemtvätt eller torka rent med trasa.
Miljömärkning: Second Nature climate neutral.

*Producer: Camira Fabrics Ltd.
Width: 140 cm.
Composition: 90 % wool / 10 % nylon.
Abrasion resistance: 100.000 Martindale.
Flammability: BS EN 1021-1 ISO 8191-1 (cigarette), BS EN 1021-2 ISO 8191-2 (match), BS 7176:1995 Low Hazard.
Cleaning: Vacuum regularly. Professionally dry clean or wipe clean with a damp cloth.
Ecolabel: Second Nature climate neutral.*

Xtreme Plus

Tillverkare: Camira Fabrics Ltd.
Bredd: 140 cm.
Komposition: 100 % Xtreme FR.
Nötningshållfasthet: 100.000 Martindale.
Flamhårdighet: EN 1021-1 (cigarette), EN 1021-2 (match), BS 7176 Medium Hazard, BS 5852 Section 4 Crib 5.
Tvättråd: 60° C.
Miljömärkning: Second Nature climate neutral.

*Producer: Camira Fabrics Ltd.
Width: 140 cm.
Composition: 100 % Xtreme FR.
Abrasion resistance: 100.000 Martindale.
Flammability: EN 1021-1 (cigarette), EN 1021-2 (match), BS 7176 Medium Hazard, BS 5852 Section 4 Crib 5.
Cleaning: 60° C.
Ecolabel: Second Nature climate neutral.*

Attraction Screen

Tillverkare: Gabriel A/S.
Bredd: 170 cm.
Komposition: 100 % polyester.
Flamhårdighet: BS 476 Class 1.
Tvättråd: Kemtvätt.

*Producer: Gabriel A/S.
Width: 170 cm.
Composition: 100 % polyester.
Flammability: BS 476 Class 1.
Cleaning: Dry clean.*

Cara

Tillverkare: Camira Fabrics Ltd.
Bredd: 170 cm.
Komposition: 100 % polyolefin.
Flamhårdighet: BS EN 1021-1 ISO 8191-1 (cigarette), BS 476 Class 1.
Tvättråd: Torka rent med trasa.

*Producer: Camira Fabrics Ltd.
Width: 170 cm.
Composition: 100 % polyolefin.
Flammability: BS EN 1021-1 ISO 8191-1 (cigarette), BS 476 Class 1.
Cleaning: Wipe clean with a damp cloth.*

Palermo

Tillverkare: BWF Tec GmbH & Co KG.
Bredd: 180 cm.
Komposition: 30 % ull / 70 % viscose (fitt).
Flamhårdighet: French standard M1.
Tvättråd: Torka rent med trasa.

*Producer: BWF Tec GmbH & Co KG.
Width: 180 cm.
Composition: 30 % wool / 70 % viscose (felt).
Flammability: French standard M1.
Cleaning: Wipe clean with a damp cloth.*

Av trycktekniska skäl kan färgerna i broschyren skilja sig något från de verkliga. Behöver du äkta färgprover, kontakta närmaste försäljningskontor eller besök någon av våra utställningar. Respektive marknads EFG-prislista anger de utförande som gäller för olika produkter.

Due to the printing process, colours shown in this brochure may differ from actual colours. For accurate colour samples, please contact your local sales office or visit our showrooms. Local price lists specify the finishes available for individual products.

Sverige

EFG Kontorsmöbler AB
S:t Eriksgatan 58
Box 49048, 100 28 Stockholm
Tel. 08-617 68 30
Fax 08-617 68 58
info@efg.se
www.efg.se

Danmark

EFG Bondo A/S
Islevdalvej 98
2610 Rødovre
Tel. 44 500 900
Fax 44 500 999
efgbondo@efgbondo.dk
www.efgbondo.dk

Norge

EFG HOV+DOKKA AS
Grønseveien 99, 0663 Oslo
Postboks 6371
Etterstad, 0604 Oslo
Tel. 21 02 35 00
Fax 21 02 35 01
efg.hovdokka@efg.no
www.efg.no

Suomi

EFG Toimistokalusteet Oy
Hämeentie 135 A
00560 Helsinki
Puh (09) 2534 4300
Faksi (09) 2534 4330
efg.markkinointi@efg.fi
www.efg.fi

France

EFG Mobilier de bureau
ZAC Paris Nord 2
33 rue des Chardonnerets
B P 49032 Tremblay en France
95912 Roissy CDG Cedex
Tel. 01 48 63 73 98
Fax 01 48 63 73 99
efg.info@efg.fr
www.efg.fr

United Kingdom

EFG Office Furniture Ltd
Building 3, Clearwater
Lingley Mere Business Park
Lingley Green Avenue
Great Sankey
Warrington WA5 3UZ
Tel: 01925 715300
Fax: 01925 715301
sales@efgoffice.co.uk
www.efgoffice.co.uk

EFG International

International sales to all other markets. Please, contact us for information about dealers and EFG services in your country.

EFG European Furniture Group AB
P.O. Box 1017, SE-573 28 Tranås
Tel. +46 140 675 25
Fax +46 140 31 18 44
export@efg.se
www.efg.info



European Furniture Group

EFG European Furniture Group AB Trehörnavägen 2, P.O. Box 1017, SE-573 28 Tranås, Sweden
Tel. +46 140 675 25, Fax +46 140 150 50, info@efg.se, www.efg.info